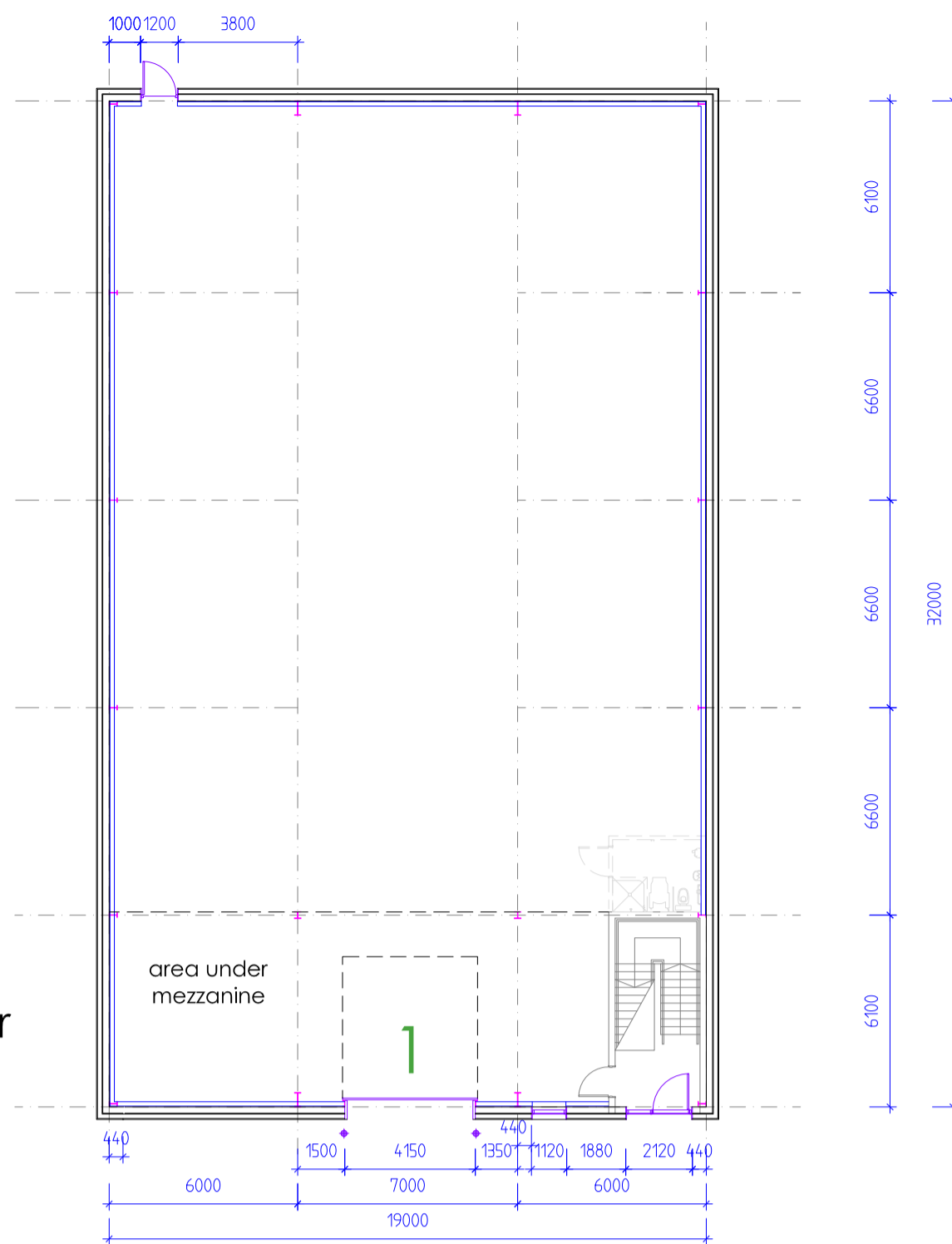


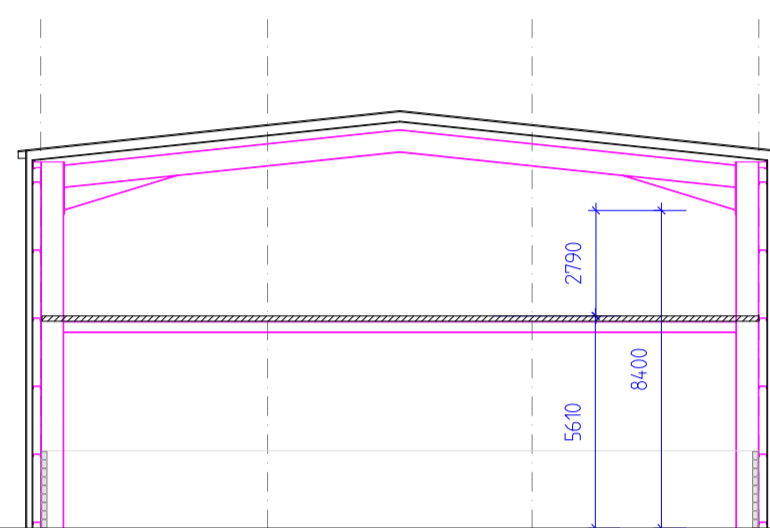
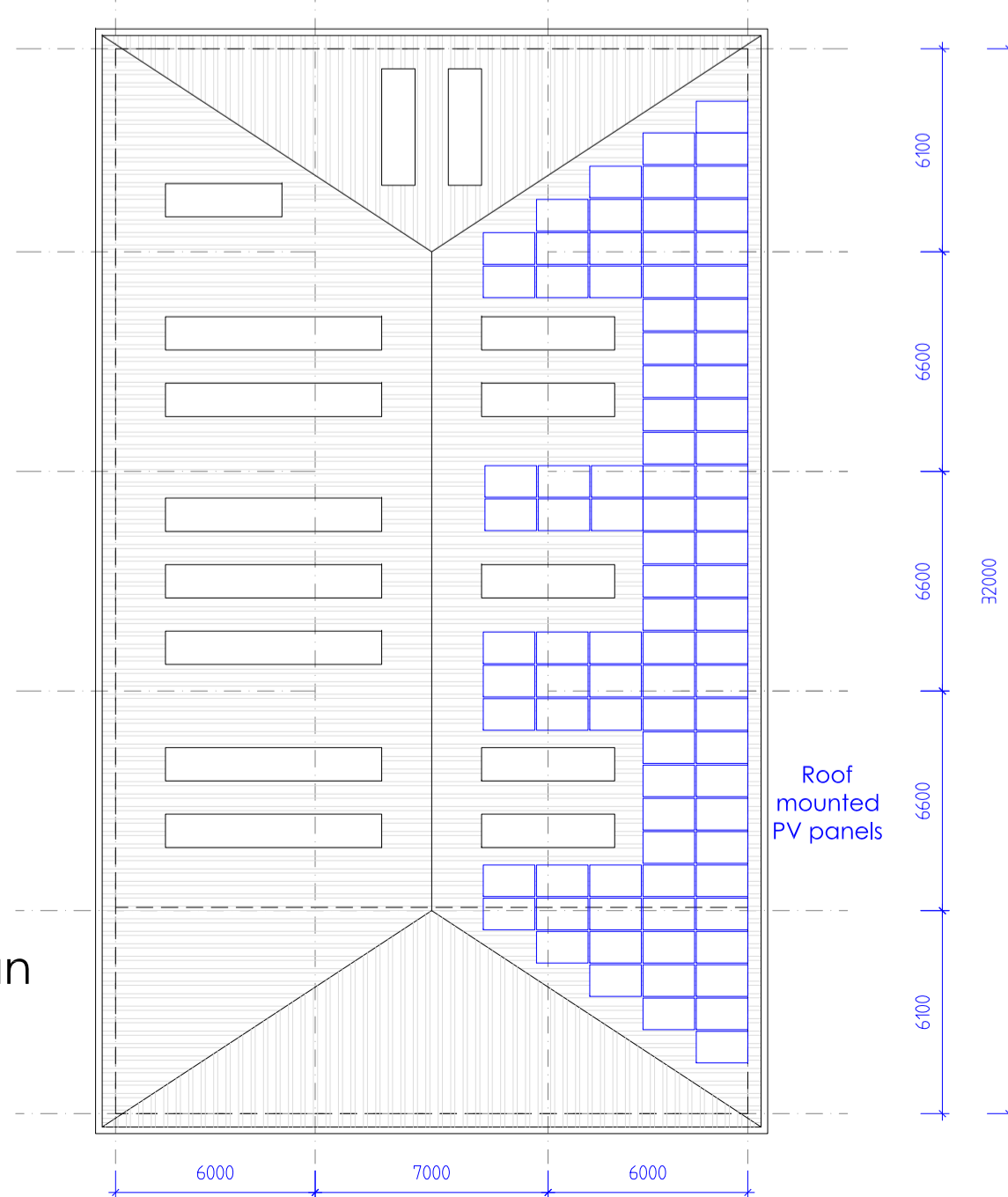
Ground Floor Plan



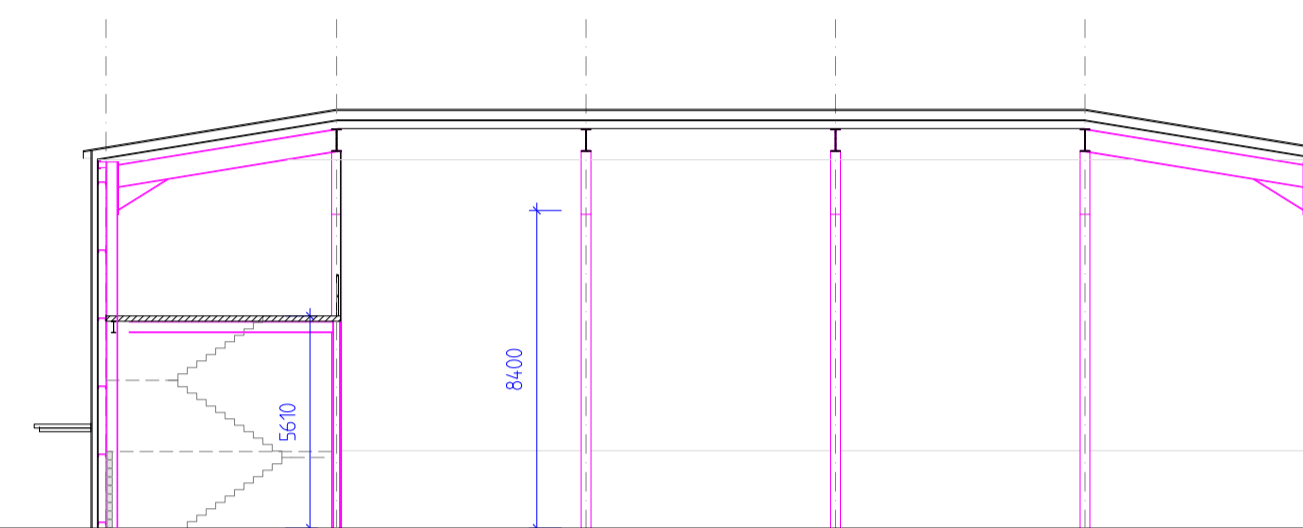
First Floor Plan



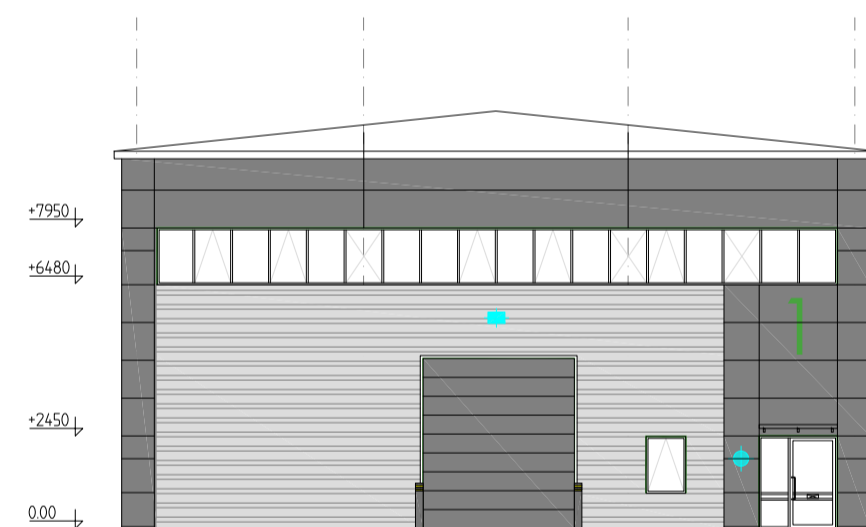
Roof Plan



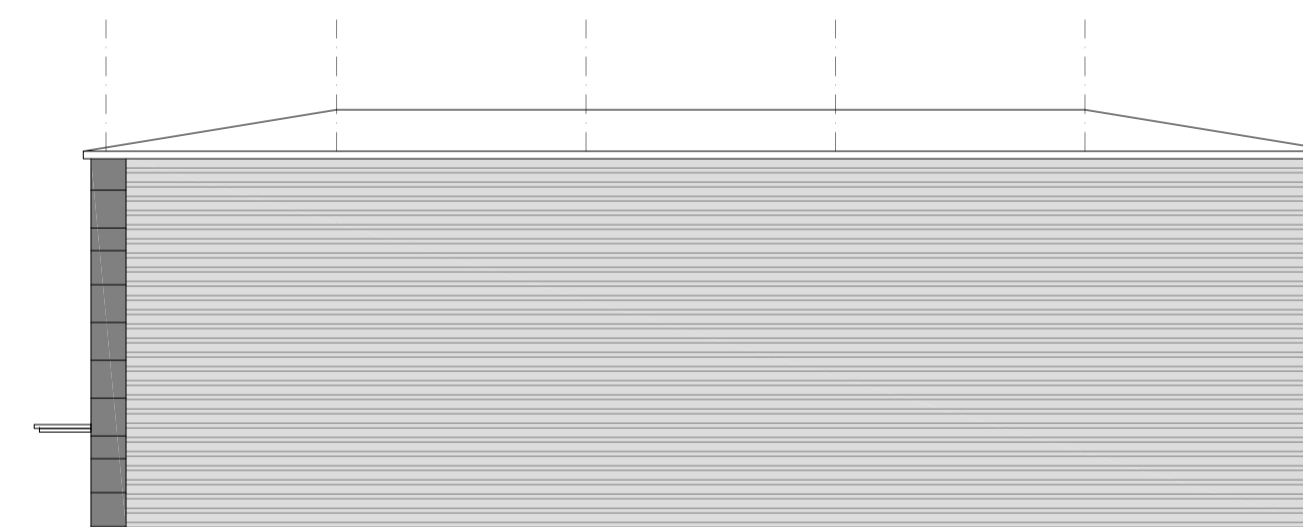
Section



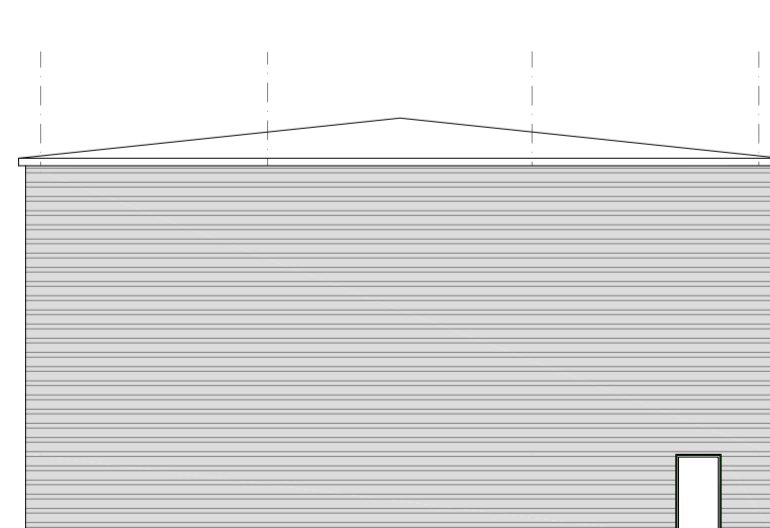
Longitudinal Section



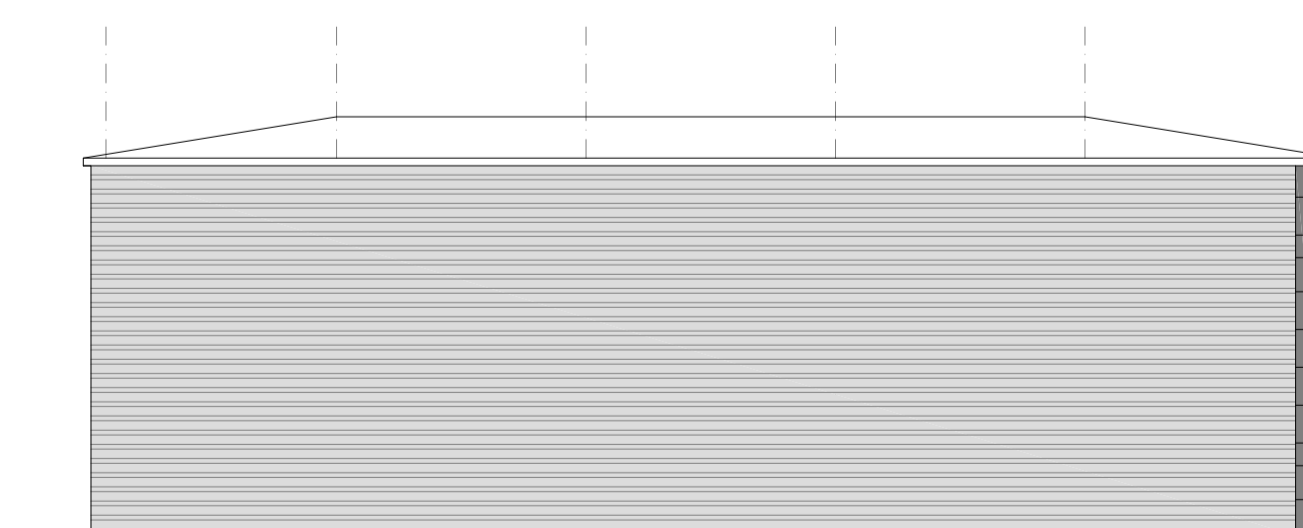
North West - Front elevation



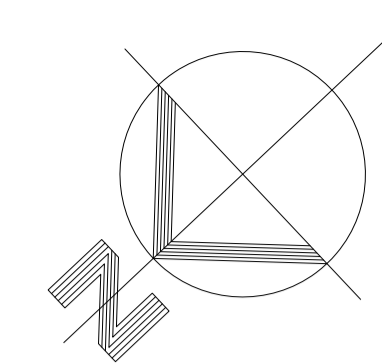
South West elevation



South East elevation
(Rear elevation)



North East elevation

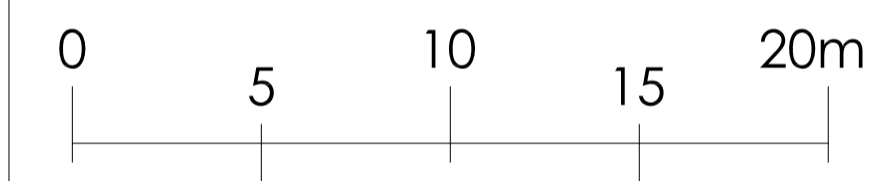


CBC Unit	Gf. area	Mezz area	Total (GEA)
1	650m ²	130m ²	780m ²
Total	650m ²	130m ²	780m ²

- Profiled roof cladding in HPS200 Goosewing gray BS 10A05
- Merlin Gray BS 18B25 gutters, R/WPs & gable fascias
- Horizontally laid Micronb composite wall cladding in Merlin Gray BS 18B25
- Powder coated aluminium entrance doors and windows in Merlin Gray BS 18B25. Entrance door leaf frames in Metallic silver RAL9006 (Part M)
- Coloured insulated loading doors in Merlin Gray BS 18B25
- Fire escape doors Metallic Silver RAL 9006
- Horizontally laid profiled wall cladding and related flashings in Prisma Metallic Silver RAL9006.
- Special RAL 6018 green flashing to jambs & head of entrance doors, windows and loading doors (see photo)

1 Unit numbers
3mm powder coated aluminium plate with matching fixings
1500mm high, colour and font to be agreed

- Obscured glazing
- Top hung opening windows
- Building mounted floodlights
- Main entrance f.e. lights (circular high quality fitting)



- Rev D:
- Rev C:
- Rev B: 14-1-2020. Roof profile amended
- Rev A: 31-10-2019. Roof PV panels added

Notes
This drawing is the sole copyright of IAN C KING Associates and no part may be reproduced without the written consent of the above
Job

Chancerygate
Minworth

Title Unit 1 - Floor plans,
Section and Elevations

Dwg No C-373-TP-03

Date 6-2019 Scale 1:200 (A1) Rev B

Drawn Checked Planning Drawing

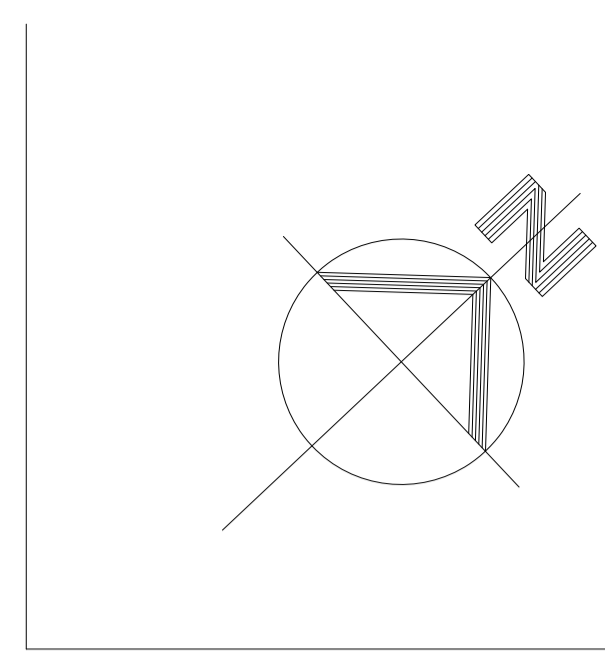
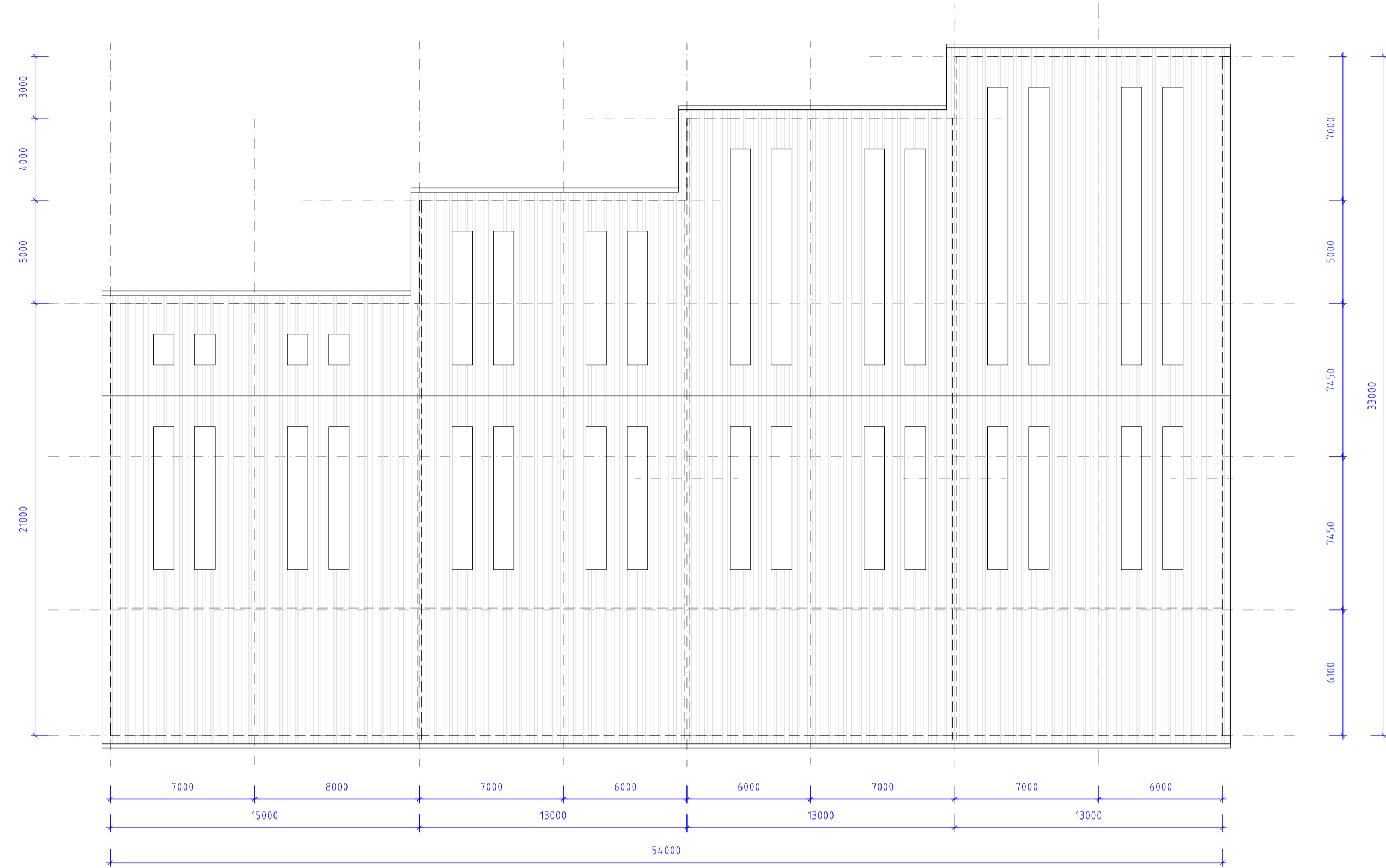
IAN C KING
ASSOCIATES - ARCHITECTS

5 St George's Court
131 Putney Bridge Road
London SW15 2PA
Tel: 020 8870 8937
E-mail: icka@iancking.co.uk



IAN C KING Associates - Architects is the Trading name of Garmory Ltd.

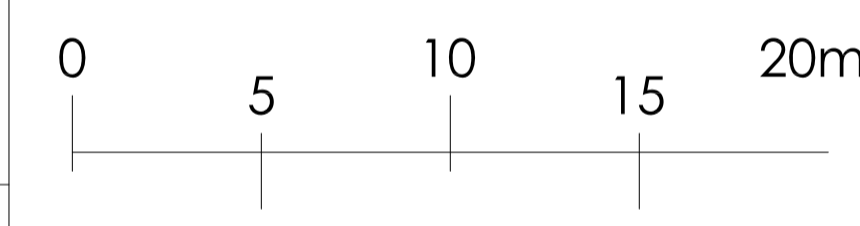
Roof Plan



- Profiled roof cladding in HPS200 Goosewing gray BS 10A05
- Merlin Gray BS 18B25 gutters, RWP's & gable fascias
- Horizontally laid Microrib composite wall cladding in Merlin Gray BS 18B25
- Powder coated aluminium entrance doors and windows in Merlin Gray BS 18B25. Entrance door leaf frames in Metallic silver RAL9006 (Part M)
- Coloured insulated loading doors in Merlin Gray BS 18B25
- Fire escape doors Metallic Silver RAL 9006
- Horizontally laid profiled wall cladding and related flashings in Prisma Metallic Silver RAL9006
- Special RAL 6018 green flashing to jambs & head of entrance doors, windows and loading doors (see photo)

1 Unit numbers
3mm powder coated aluminium plate with matching fixings
1500mm high, colour and font to be agreed

- Obscured glazing
- Top hung opening windows
- Building mounted floodlights
- Main entrance f.e. lights (circular high quality fitting)



Rev D:
Rev C:
Rev B: 16-7-2020: Windows added to north-west (rear) elevation, cladding amended to suit
Rev A: 8-11-2019: Elevations amended

Notes
This drawing is the sole copyright of IAN C KING Associates and no part may be reproduced without the written consent of the above
Job

**Chancerygate
Minworth**

Title **Units 2 - 5 - Roof Plan,
Section and Elevations**

Drg No **C-373-TP-05**

Date **6-2019** Scale **1:200 (A1)** Rev **B**

Drawn Checked Planning Drawing

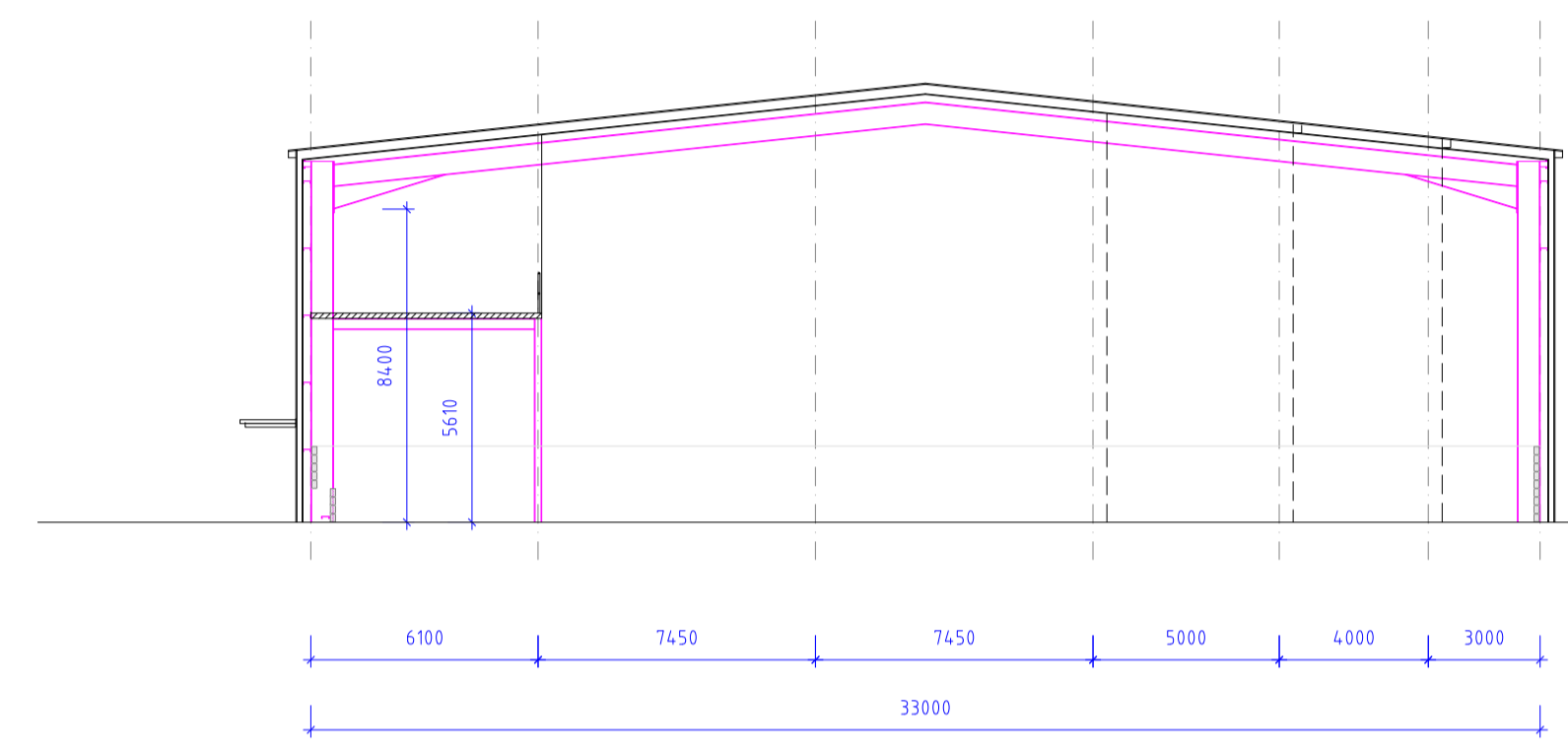
**IAN C KING
ASSOCIATES - ARCHITECTS**

5 St George's Court
131 Putney Bridge Road
London SW15 2PA
Tel: 020 8870 8937
E-mail: ick@iancking.co.uk

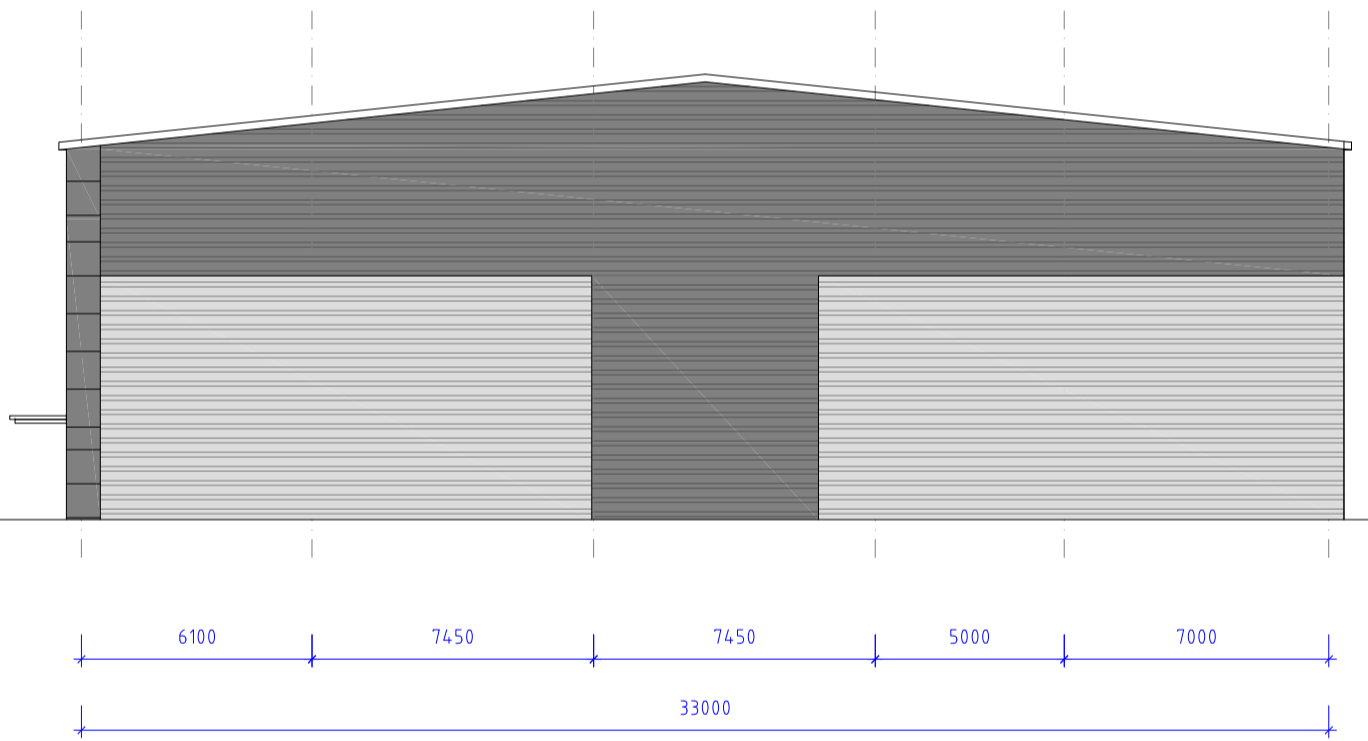
interface
ISO 9001
CERTIFICATION

UKAS
9001

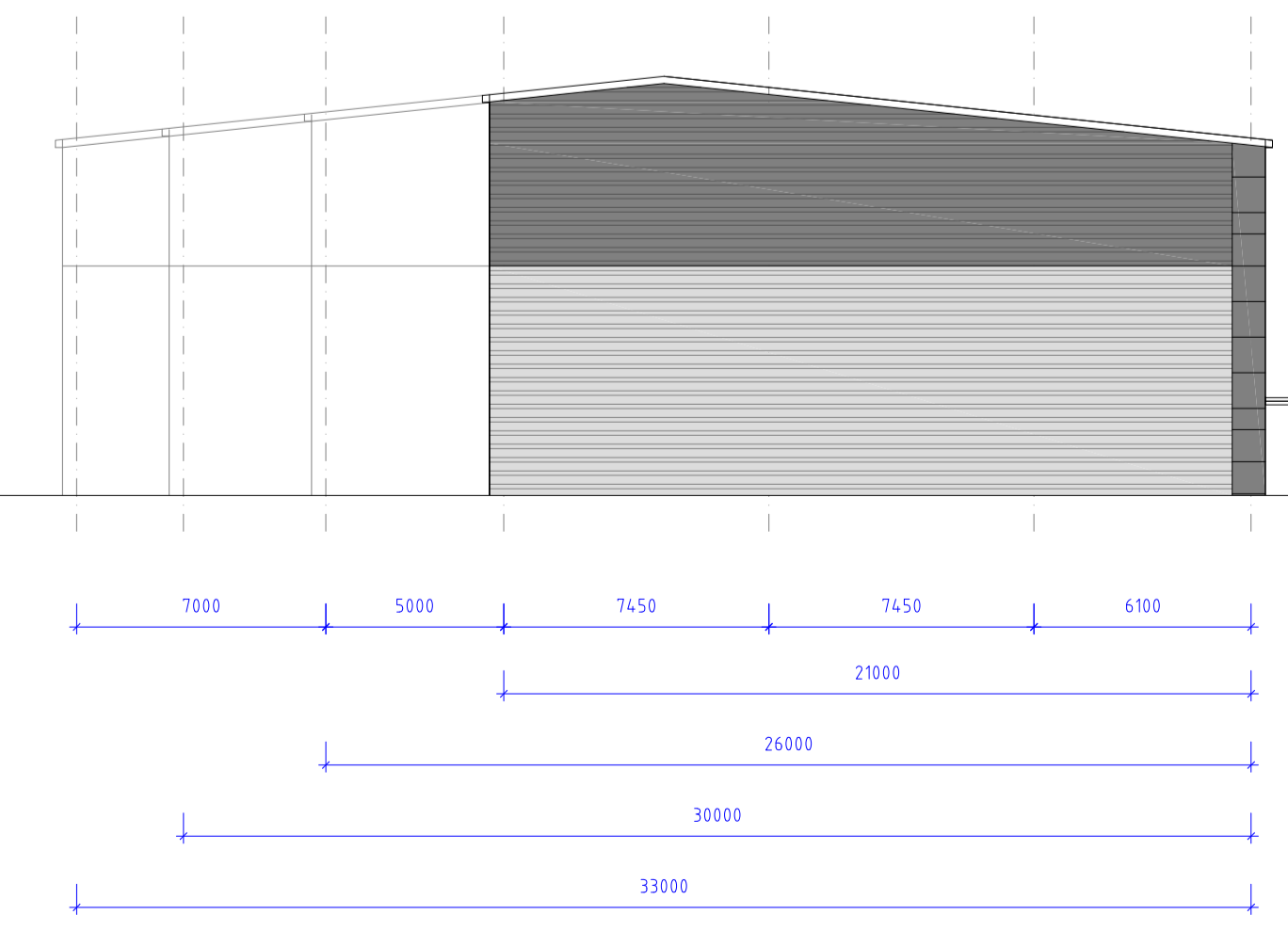
IAN C KING Associates - Architects is the Trading name of Garmony Ltd.



Typical Section



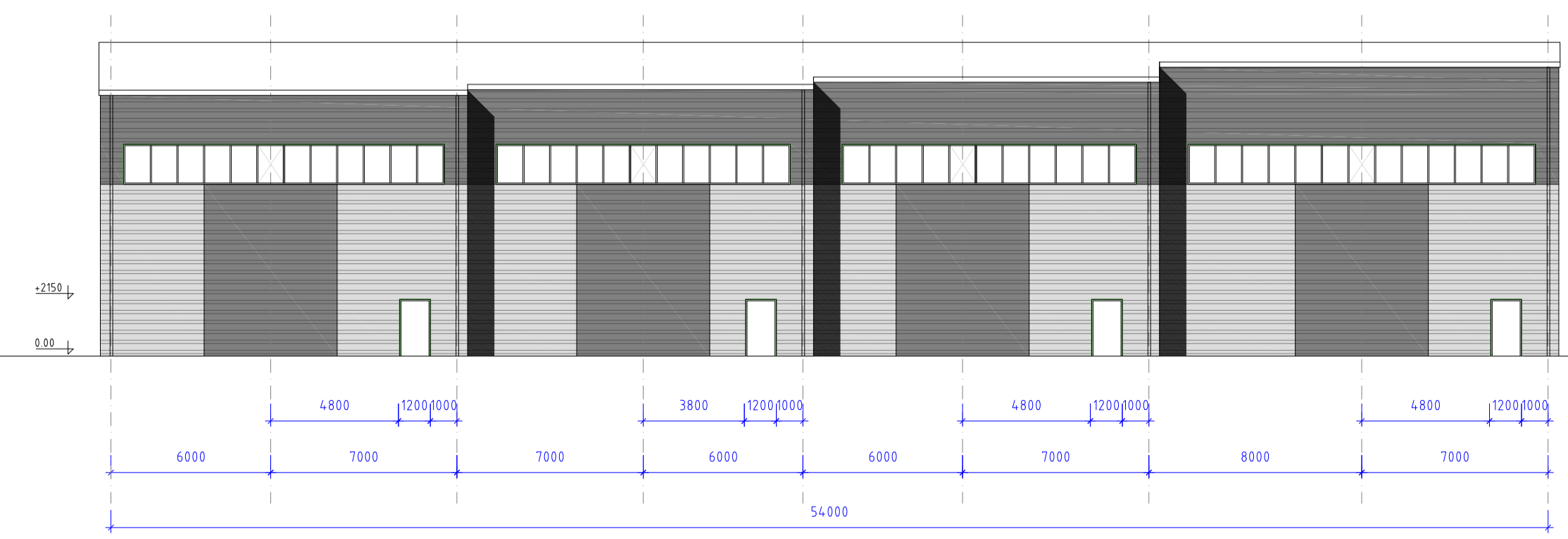
North East elevation



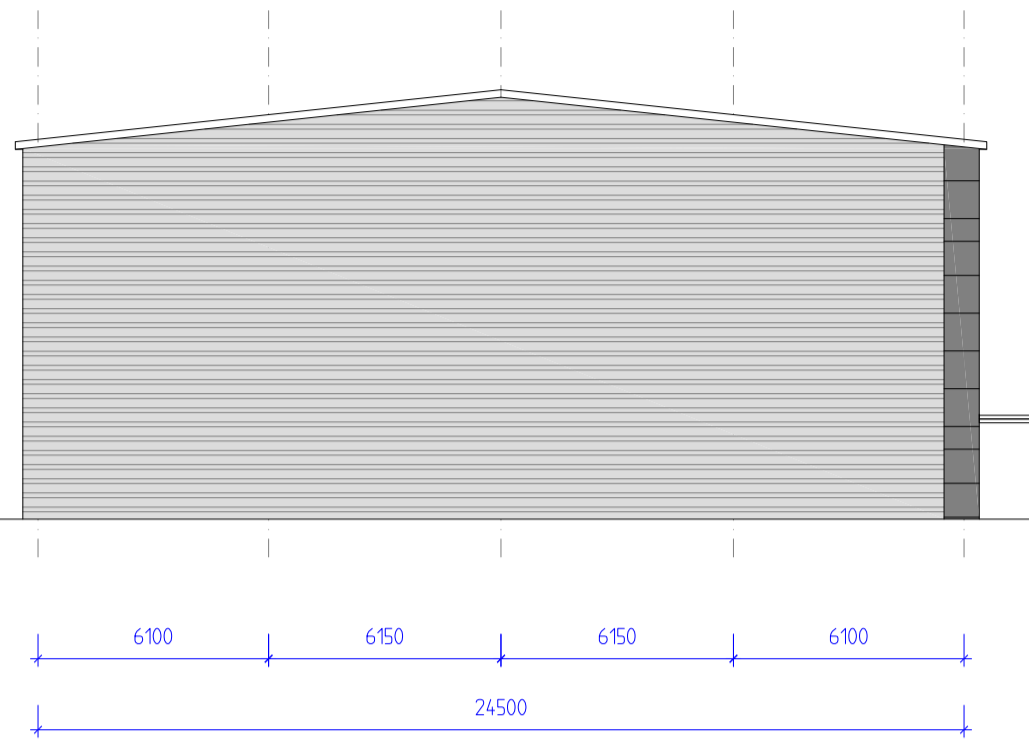
South West elevation



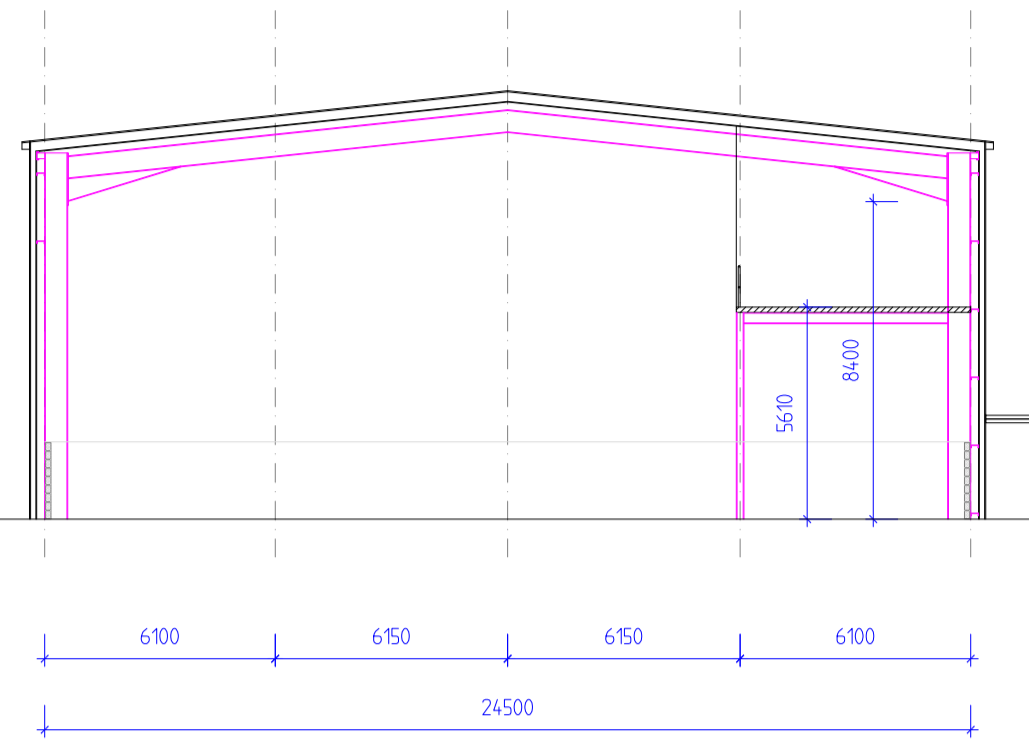
South East elevation



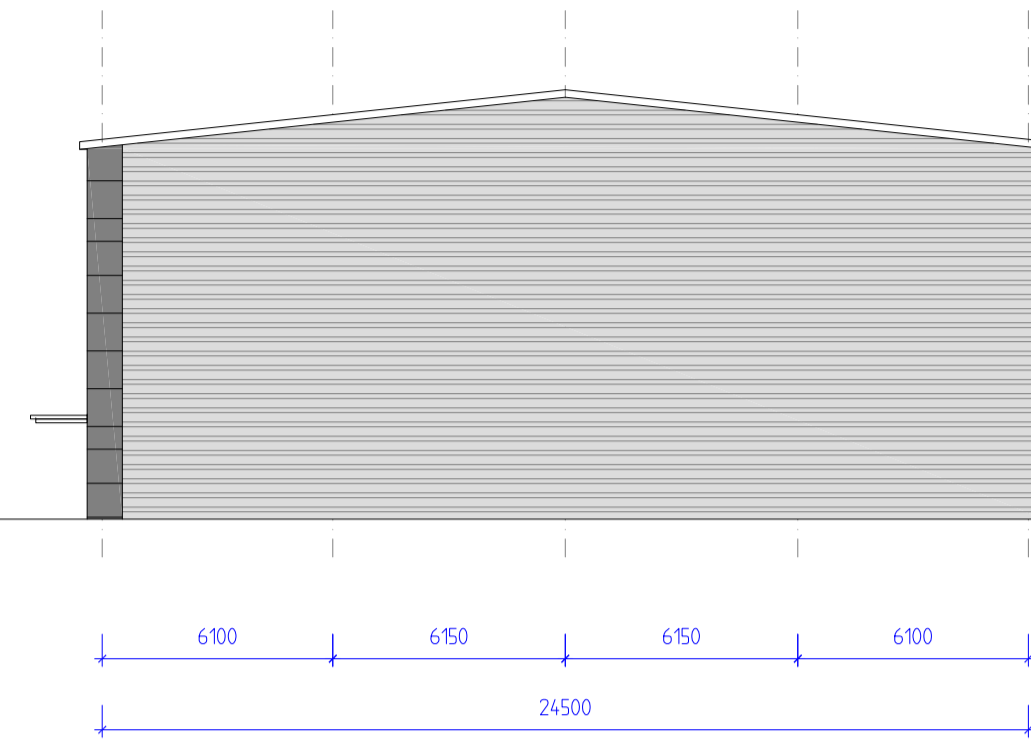
North West elevation



North East elevation



Section

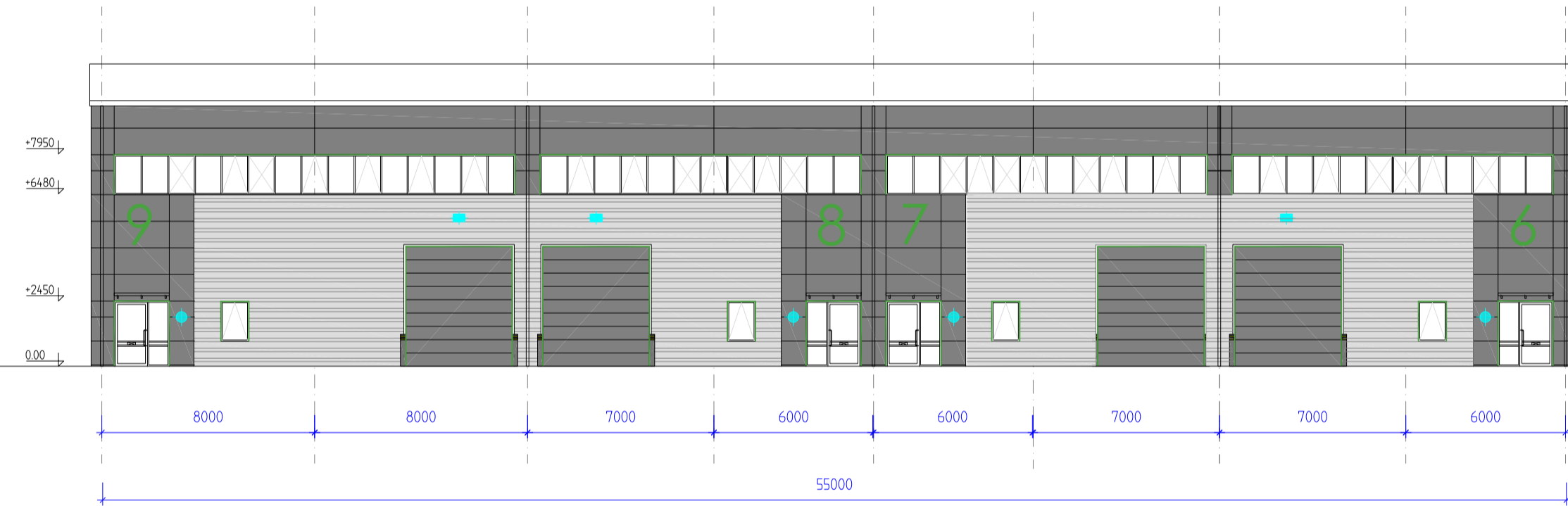
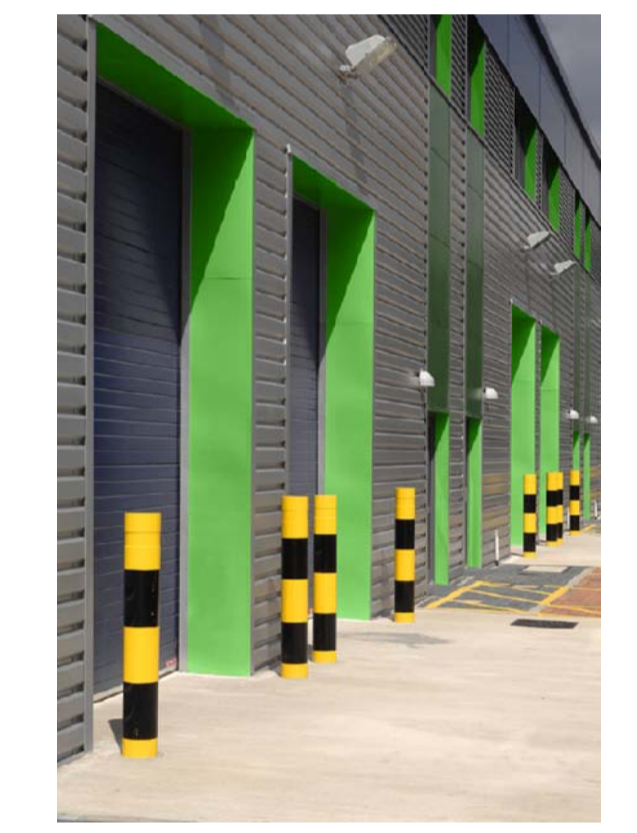


South West elevation

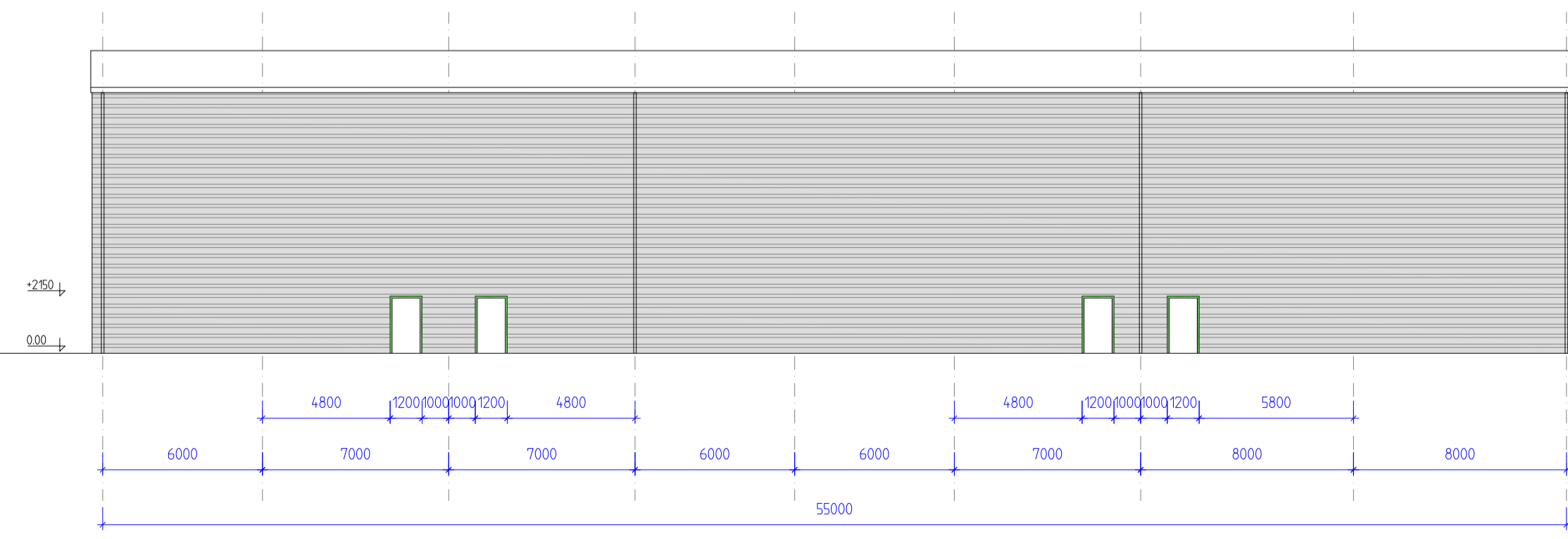
- Profiled roof cladding in HPS200 Goosewing gray BS 10A05
- Merlin Gray BS 18825 gutters, RWPs & gable fascias
- Horizontally laid Microb composite wall cladding in Merlin Gray BS 18825
- Powder coated aluminium entrance doors and windows in Merlin Gray BS 18825. Entrance door leaf frames in Metallic silver RAL9006 (Part M)
- Coloured insulated loading doors in Merlin Gray BS 18825
- Fire escape doors Metallic Silver RAL 9006
- Horizontally laid profiled wall cladding and related flashings in Prisma Metallic Silver RAL9006.
- Special RAL 6018 green flashing to jambs & head of entrance doors, windows and loading doors (see photo)

1 Unit numbers
3mm powder coated aluminium plate with matching fixings
1500mm high, colour and font to be agreed

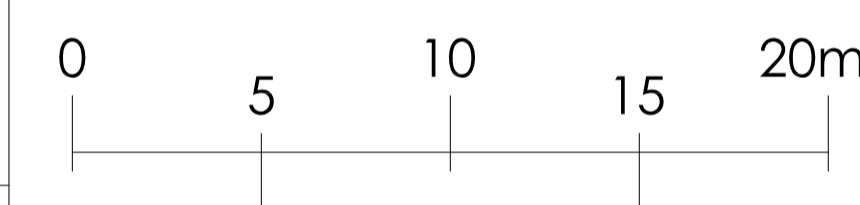
- Obscured glazing
- Top hung opening windows
- Building mounted floodlights
- Main entrance f.e. lights (circular high quality fitting)



North West elevation



South East elevation
(Rear elevation)



Rev D:
Rev C:
Rev B:
Rev A:

Notes
This drawing is the sole copyright of IAN C KING Associates and no part may be reproduced without the written consent of the above
Job

**Chancerygate
Minworth**

Title
**Units 6 - 9 - Typical Section
and Elevations**

Org No	C-373-TP-07	
Date	6-2019	Scale 1:200 (A1)
Drawn	Checked	Planning Drawing

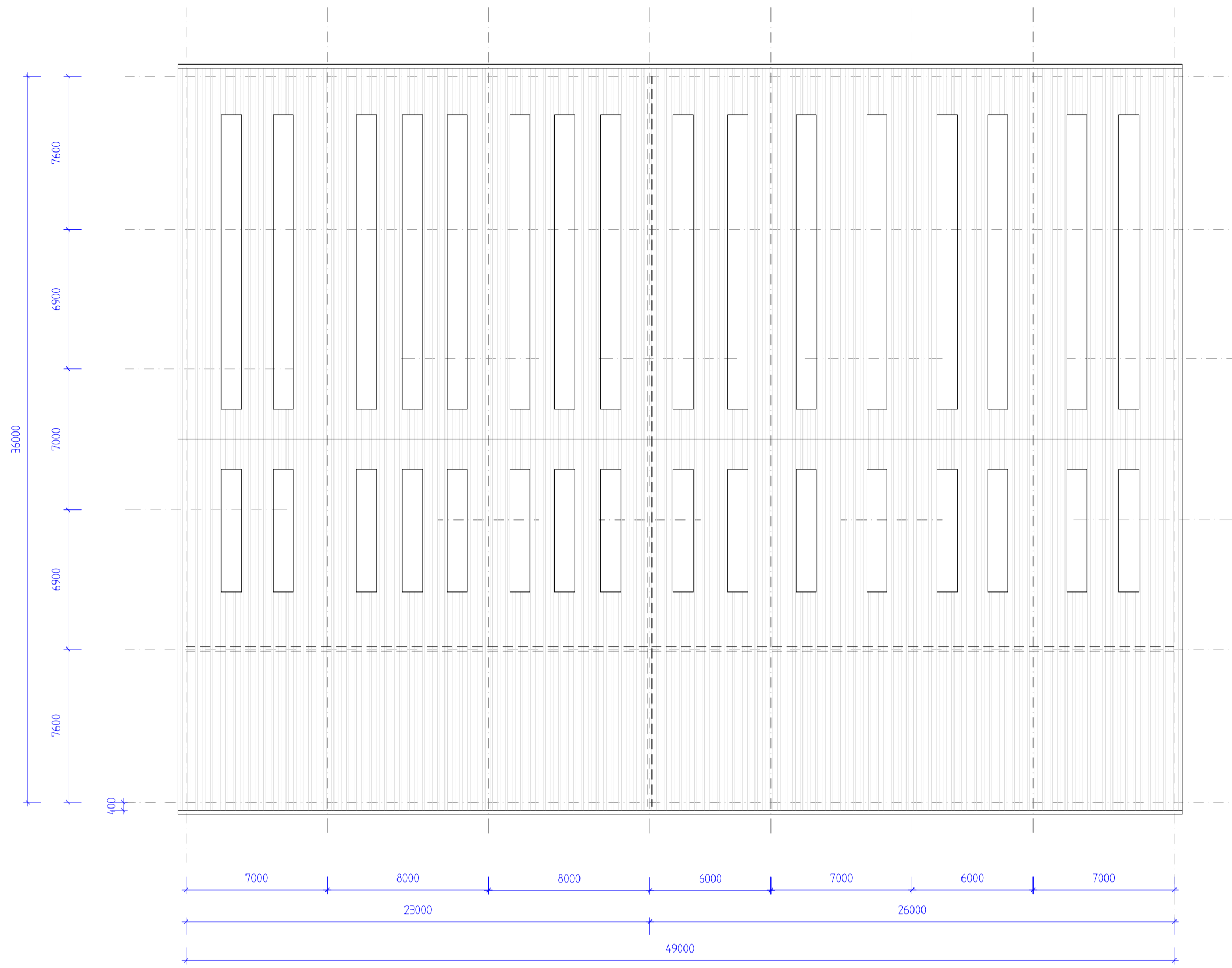
IAN C KING
ASSOCIATES - ARCHITECTS

5 St George's Court
131 Putney Bridge Road
London SW15 2PA
Tel: 020 8870 8937
E-mail: icka@iancking.co.uk

interface
ISO 9001
CERTIFICATION

UKAS
CERTIFICATION

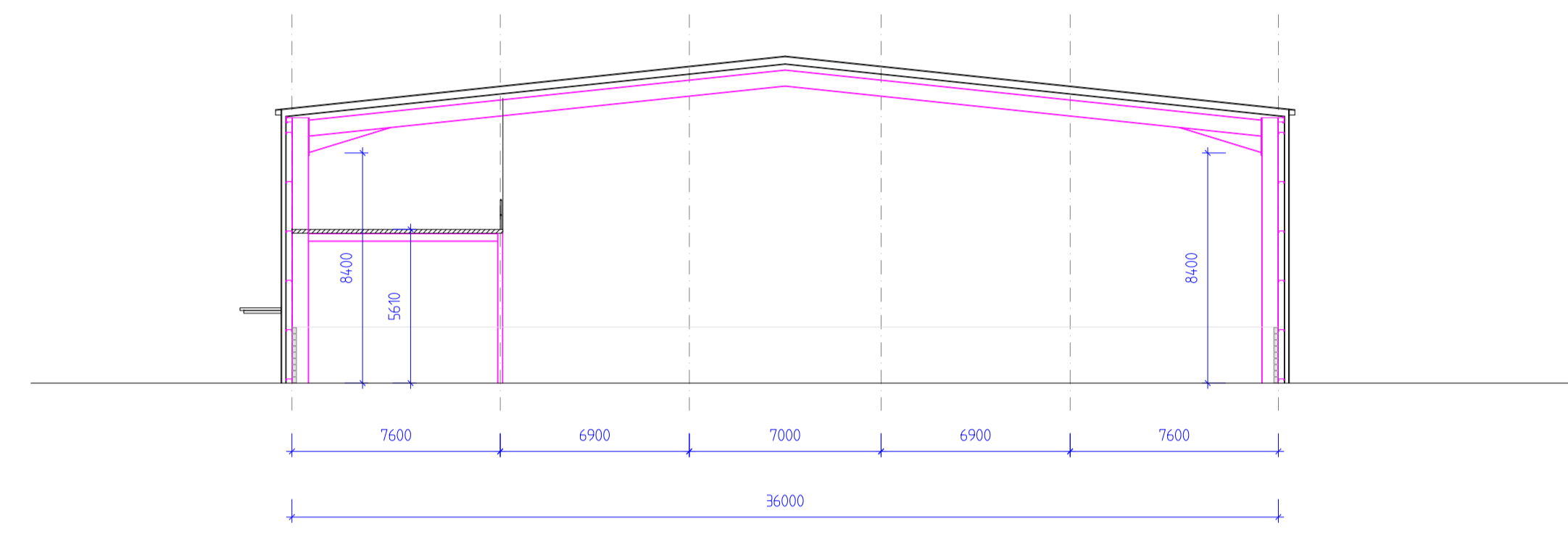
IAN C KING Associates - Architects is the Trading name of Gammony Ltd.



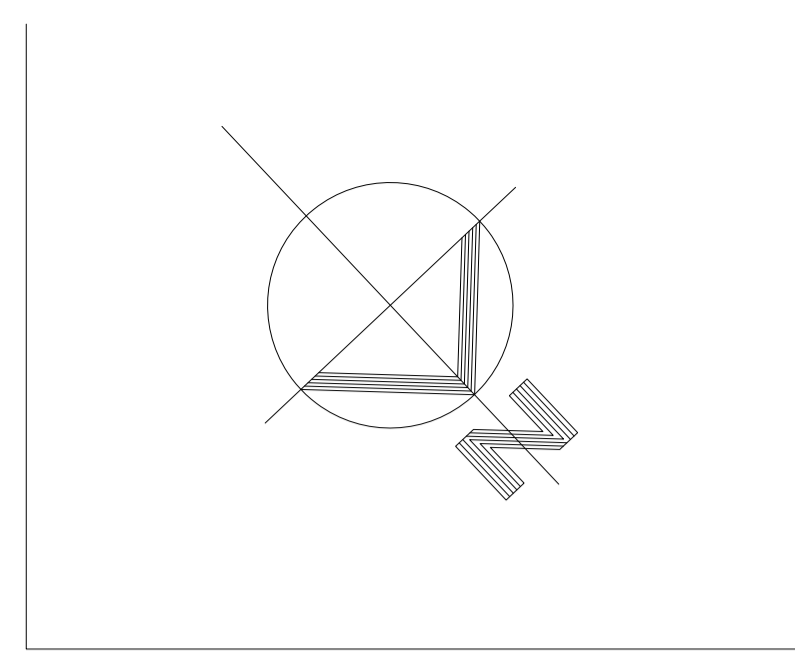
Roof Plan

11

10



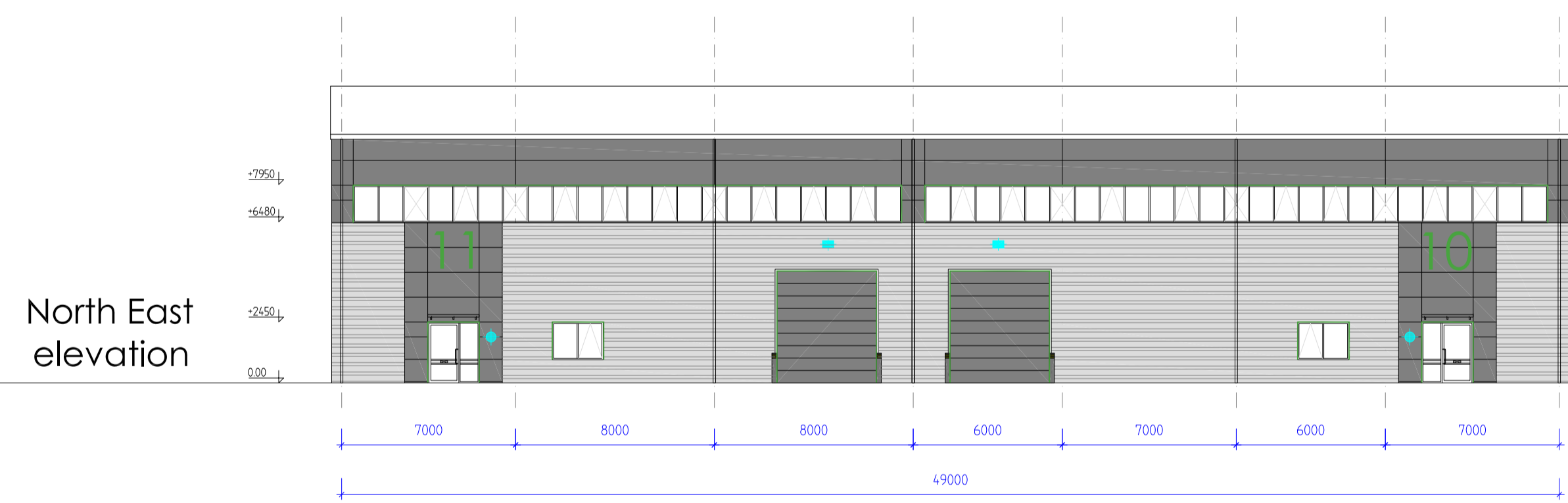
Typical Section



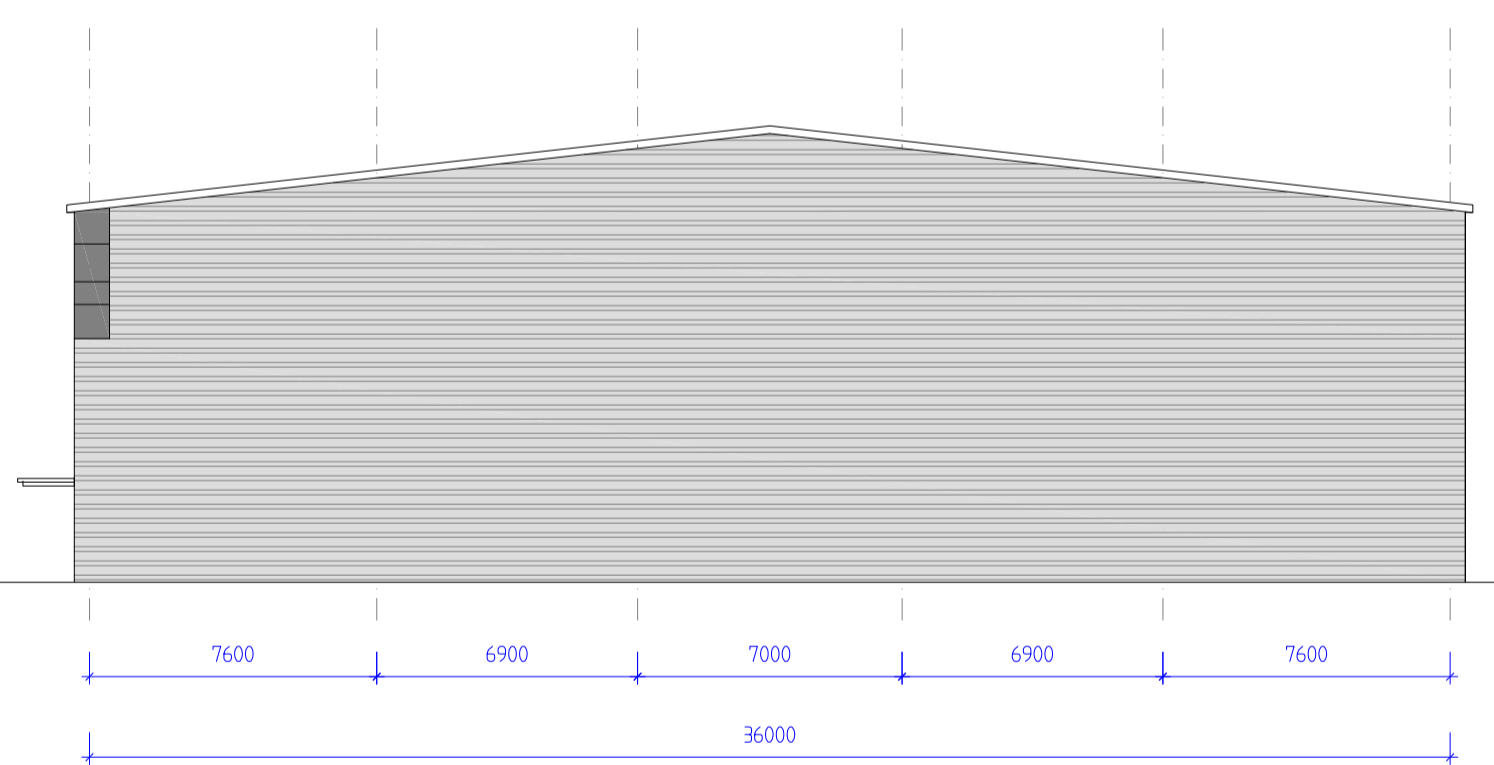
- Profiled roof cladding in HPS200 Goosewing gray BS 10A05
- Merlin Gray BS 18B25 gutters, RWPs & gable fascias
- Horizontally laid Micronb composite wall cladding in Merlin Gray BS 18B25
- Powder coated aluminium entrance doors and windows in Merlin Gray BS 18B25. Entrance door leaf frames in Metallic silver RAL9006 (Part M)
- Coloured insulated loading doors in Merlin Gray BS 18B25
- Fire escape doors Metallic Silver RAL 9006
- Horizontally laid profiled wall cladding and related flashings in Prisma Metallic Silver RAL9006.
- Special RAL 6018 green flashing to jambs & head of entrance doors, windows and loading doors (see photo)

1 Unit numbers
3mm powder coated aluminium plate with matching fixings
1500mm high, colour and font to be agreed

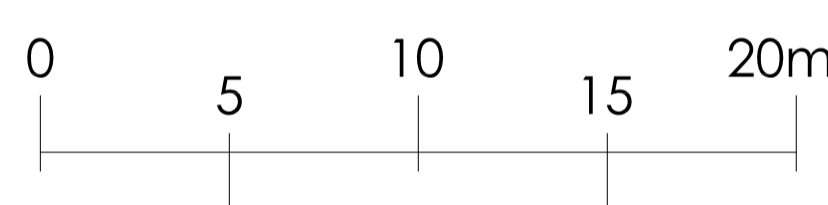
- Obscured glazing
- Top hung opening windows
- Building mounted floodlights
- Main entrance f.e. lights (circular high quality fitting)



North East elevation

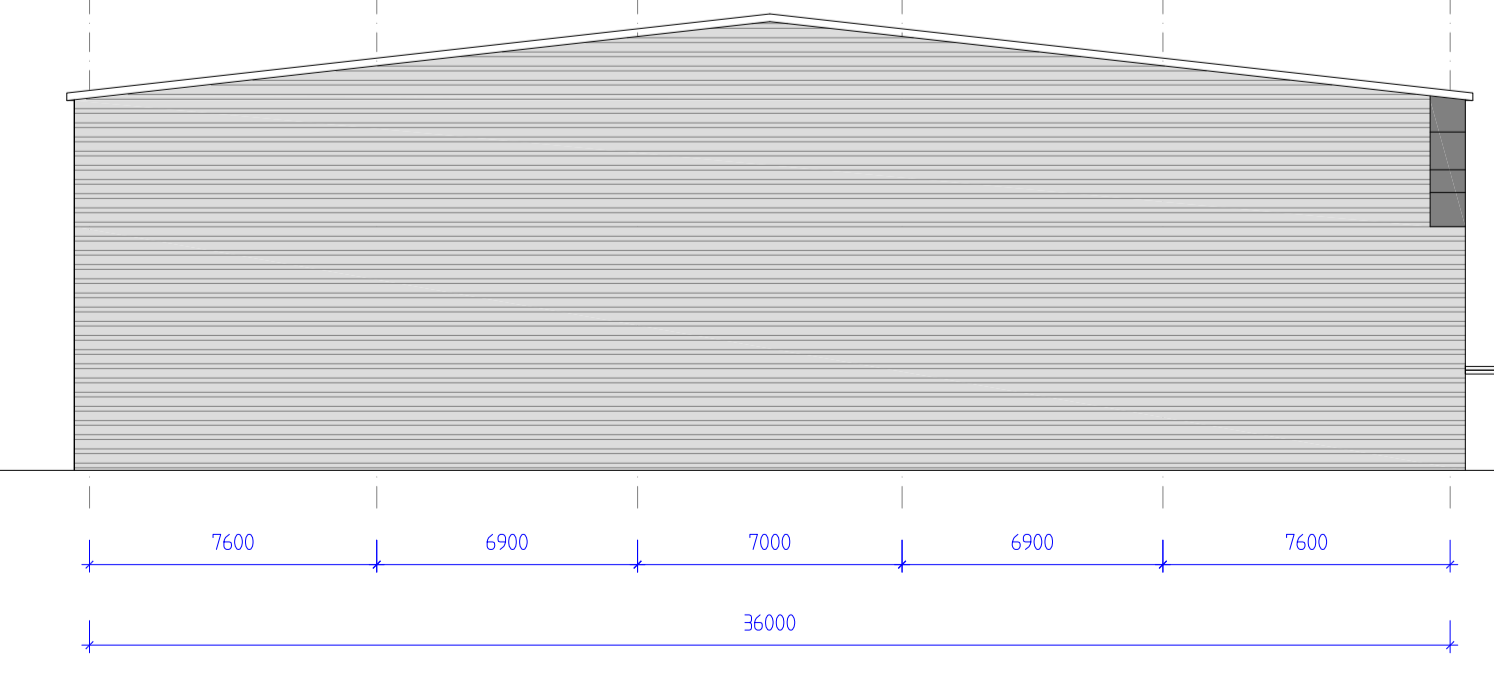
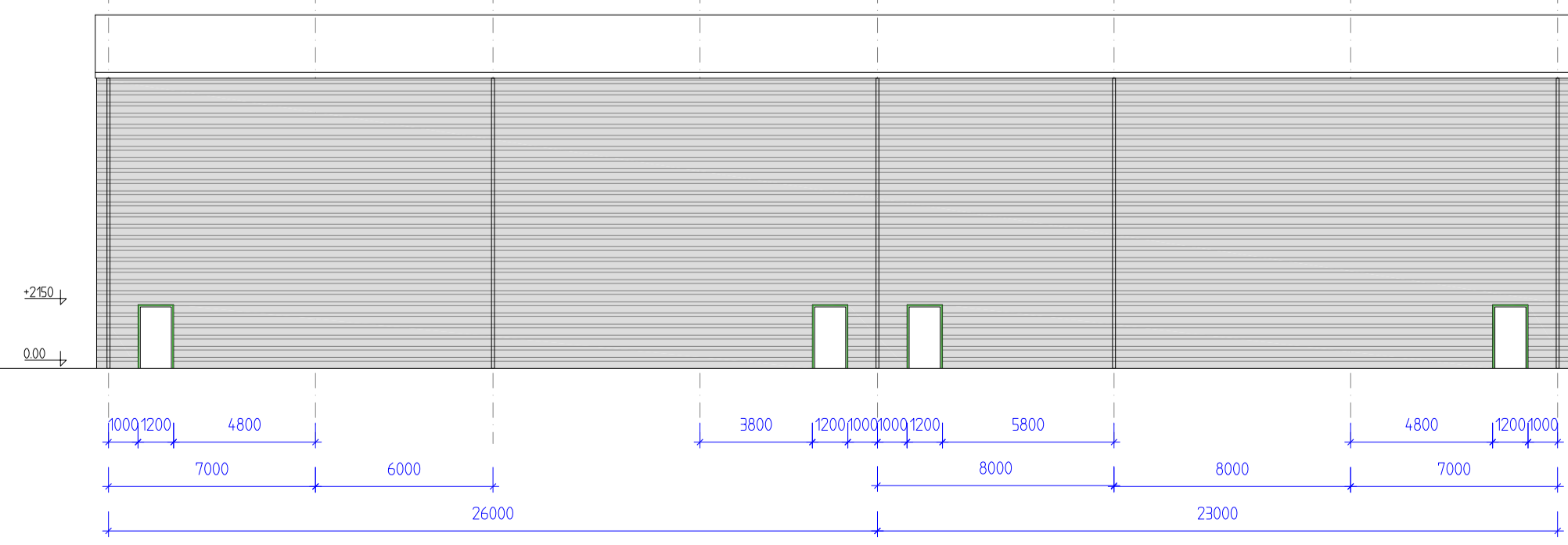


North West elevation



Rev D:
Rev C:
Rev B:
Rev A:

South West elevation
(Rear elevation)



South East elevation

Notes
This drawing is the sole copyright of IAN C KING Associates and no part may be reproduced without the written consent of the above
Job

**Chancerygate
Minworth**

Title
**Units 10 - 11 - Roof Plan,
Elevations and Typical Section**

Dwg No
C-373-TP-09

Date 6-2019	Scale 1:200 (A1)	Rev -
Drawn	Checked	Planning Drawing

**IAN C KING
ASSOCIATES - ARCHITECTS**

5 St George's Court
131 Putney Bridge Road
London SW15 2PA
Tel: 020 8870 8937
E-mail: ick@iancking.co.uk

Interface
ISO 9001
CERTIFICATION

UKAS
4700

IAN C KING Associates - Architects is the Trading name of Gammony Ltd.