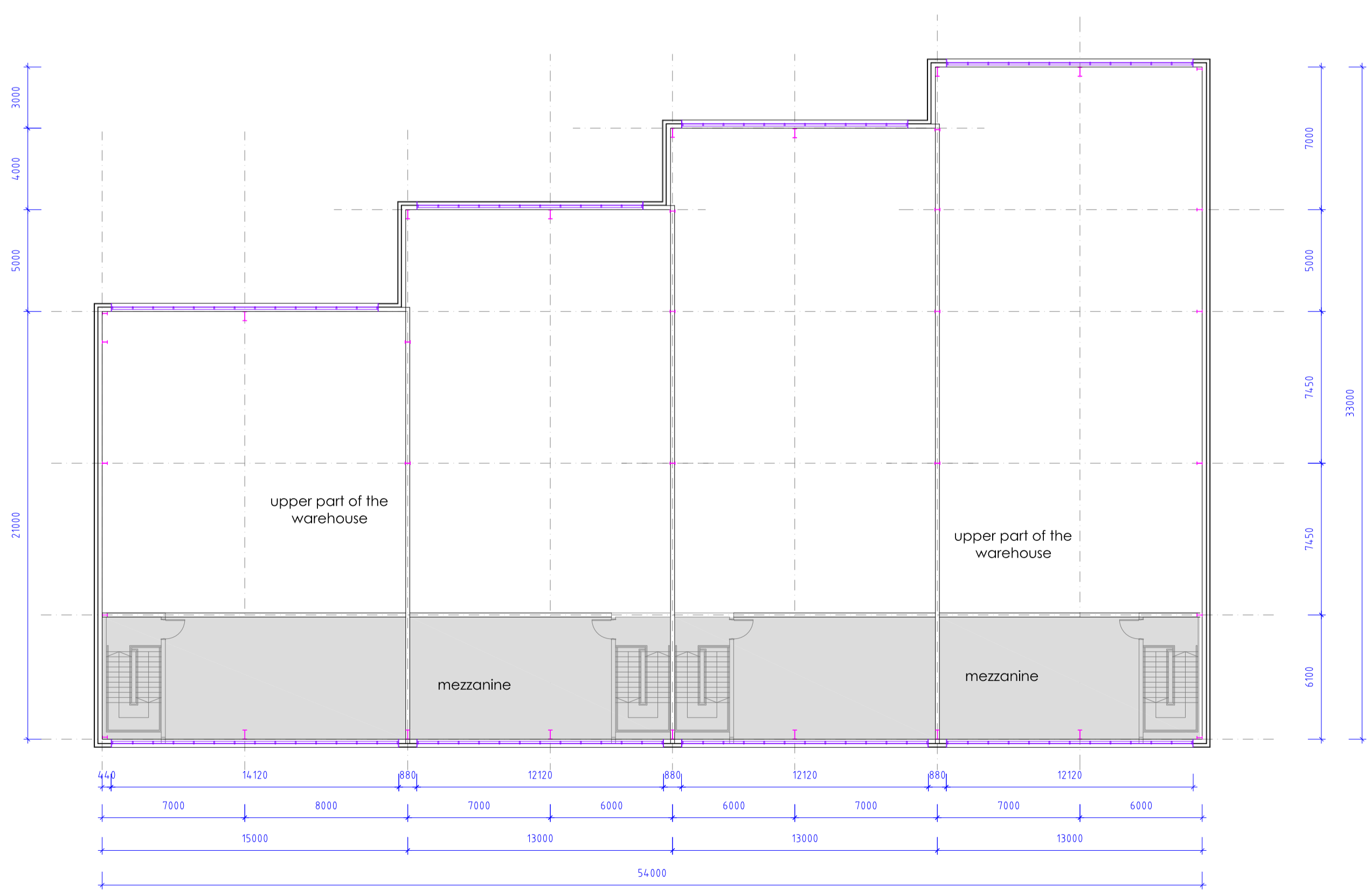
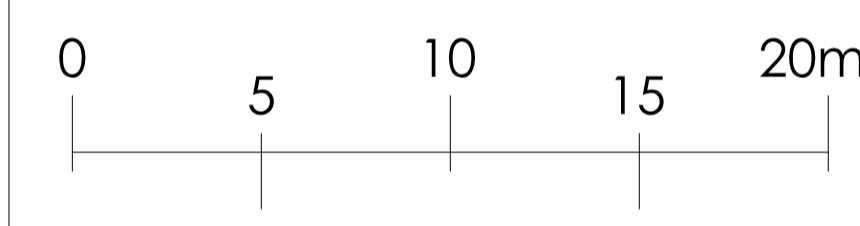


Ground Floor Plan

CBC Unit	G.f. area	Mezz area	Total (GEA)
2	453m ²	88m ²	541m ²
3	402m ²	86m ²	488m ²
4	350m ²	86m ²	436m ²
5	335m ²	100m ²	435m ²
Total	1,540m²	360m²	1,900m²



First Floor Plan



Rev D:
Rev C:
Rev B:
Rev A: 16-7-2020: Windows added to north-west (rear) elevation

Notes
 This drawing is the sole copyright of IAN C KING Associates and no part may be reproduced without the written consent of the above
 Job

**Chancerygate
 Minworth**

Title **Units 2 - 5 - Floor plans
 Ground & First**

Drg No **C-373-TP-04**

Date **6-2019** Scale **1:200 (A1)** Rev **A**

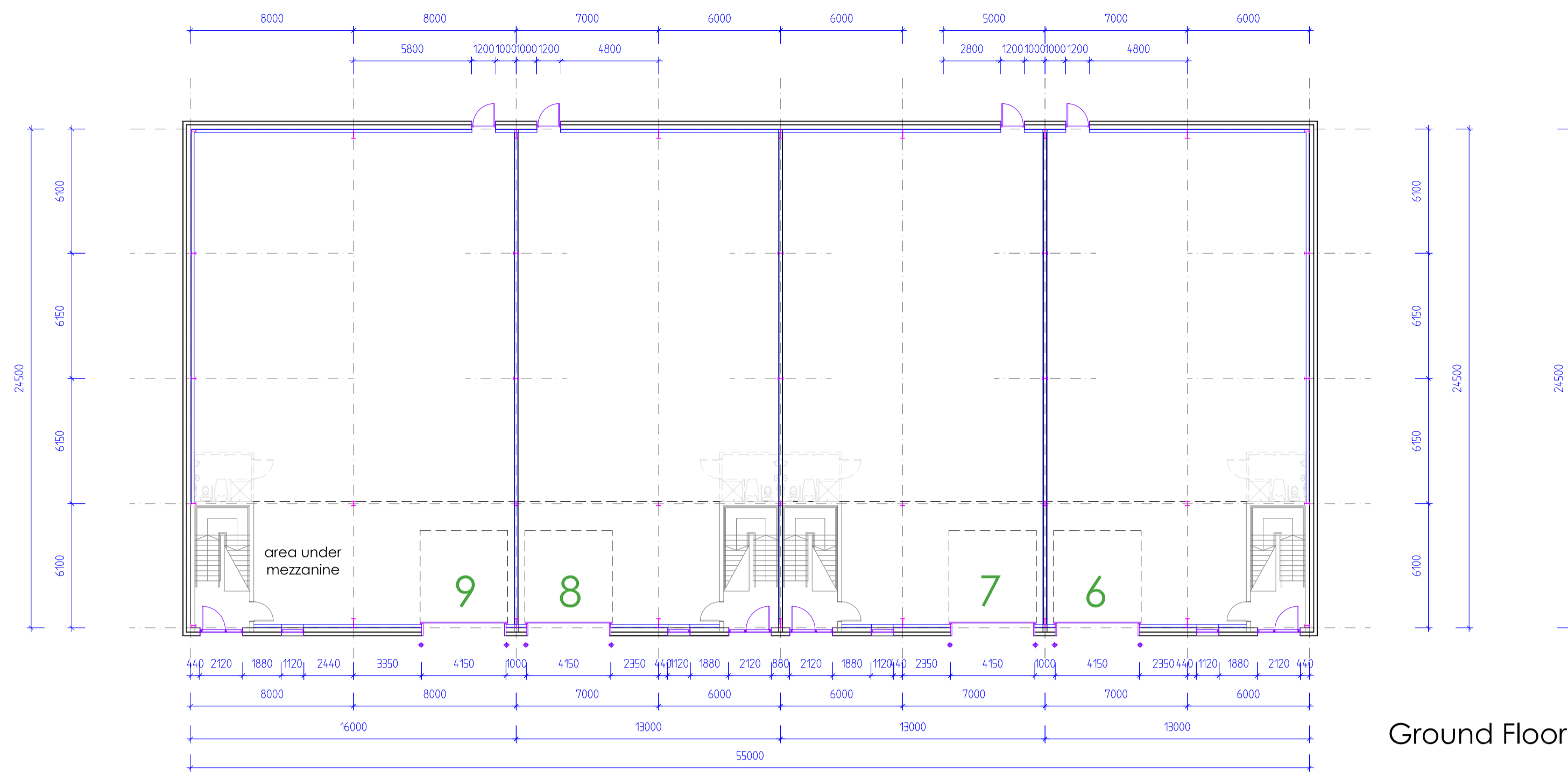
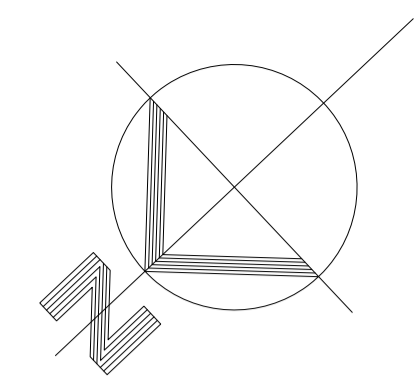
Drawn Checked Planning Drawing

**IAN C KING
 ASSOCIATES - ARCHITECTS**

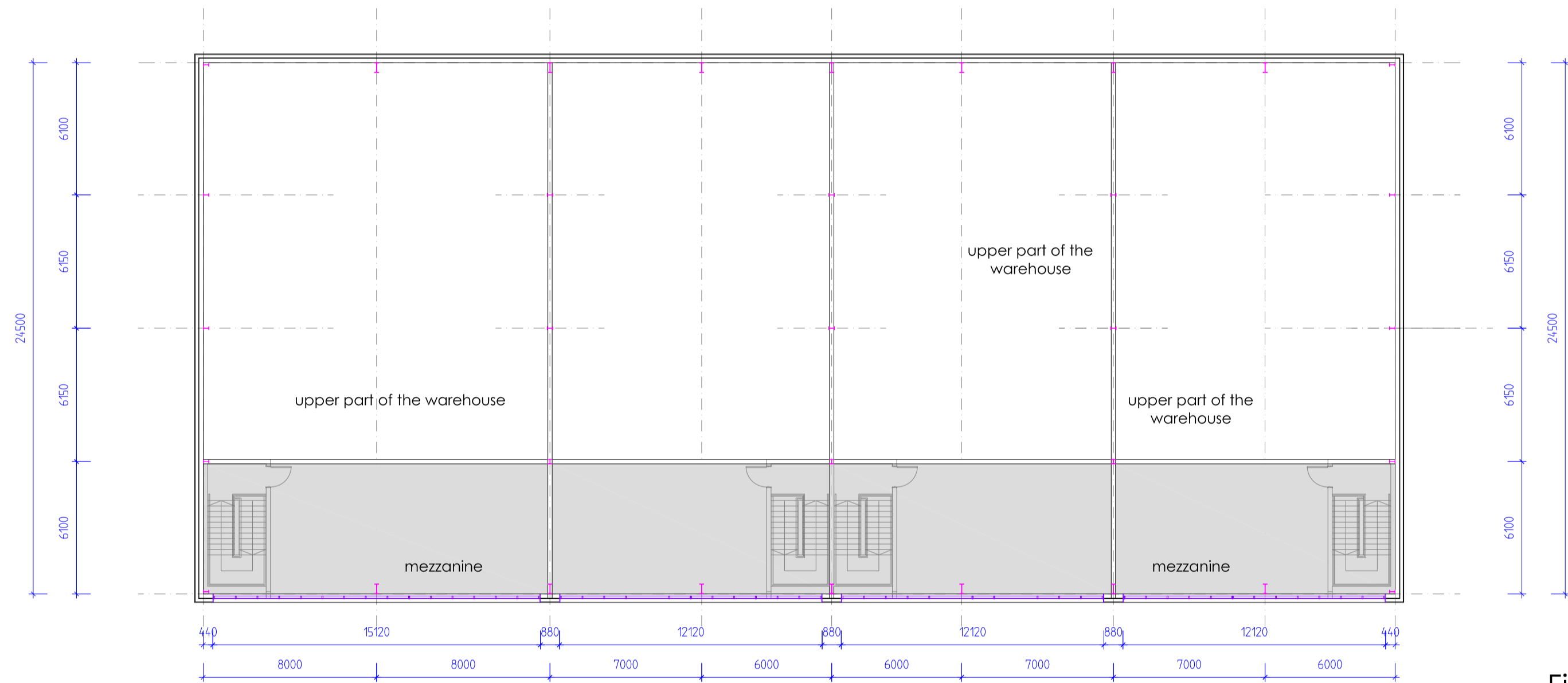
5 St George's Court
 131 Putney Bridge Road
 London SW15 2PA
 Tel: 020 8870 8937
 E-mail: ick@iancking.co.uk



IAN C KING Associates - Architects is the Trading name of Garmony Ltd



Ground Floor Plan

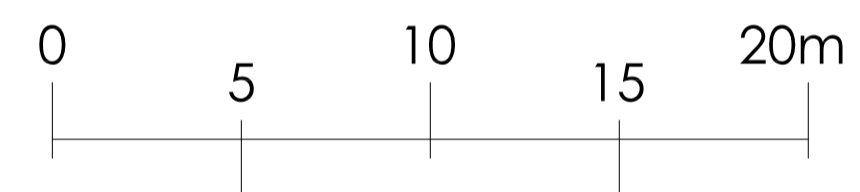


First Floor Plan



Roof Plan

CBC Unit	Gf. area	Mezz area	Total (GEA)
6	339m ²	88m ²	427m ²
7	329m ²	86m ²	415m ²
8	329m ²	86m ²	415m ²
9	413m ²	110m ²	523m ²
Total	1410m²	370m²	1780m²



- Rev D:
- Rev C:
- Rev B:
- Rev A: 12-6-2019: Roof PV panels removed

Notes
 This drawing is the sole copyright of IAN C KING Associates and no part may be reproduced without the written consent of the above
 Job

**Chancerygate
 Minworth**

Title **Units 6 - 9 - Floor plans
 Ground, First & Roof**

Dwg No **C-373-TP-06**

Date **6-2019** Scale **1:200 (A1)** Rev **-**

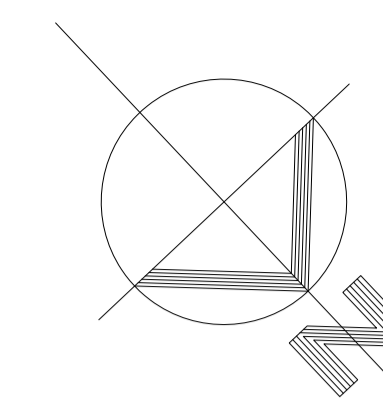
Drawn Checked Planning Drawing

**IAN C KING
 ASSOCIATES - ARCHITECTS**

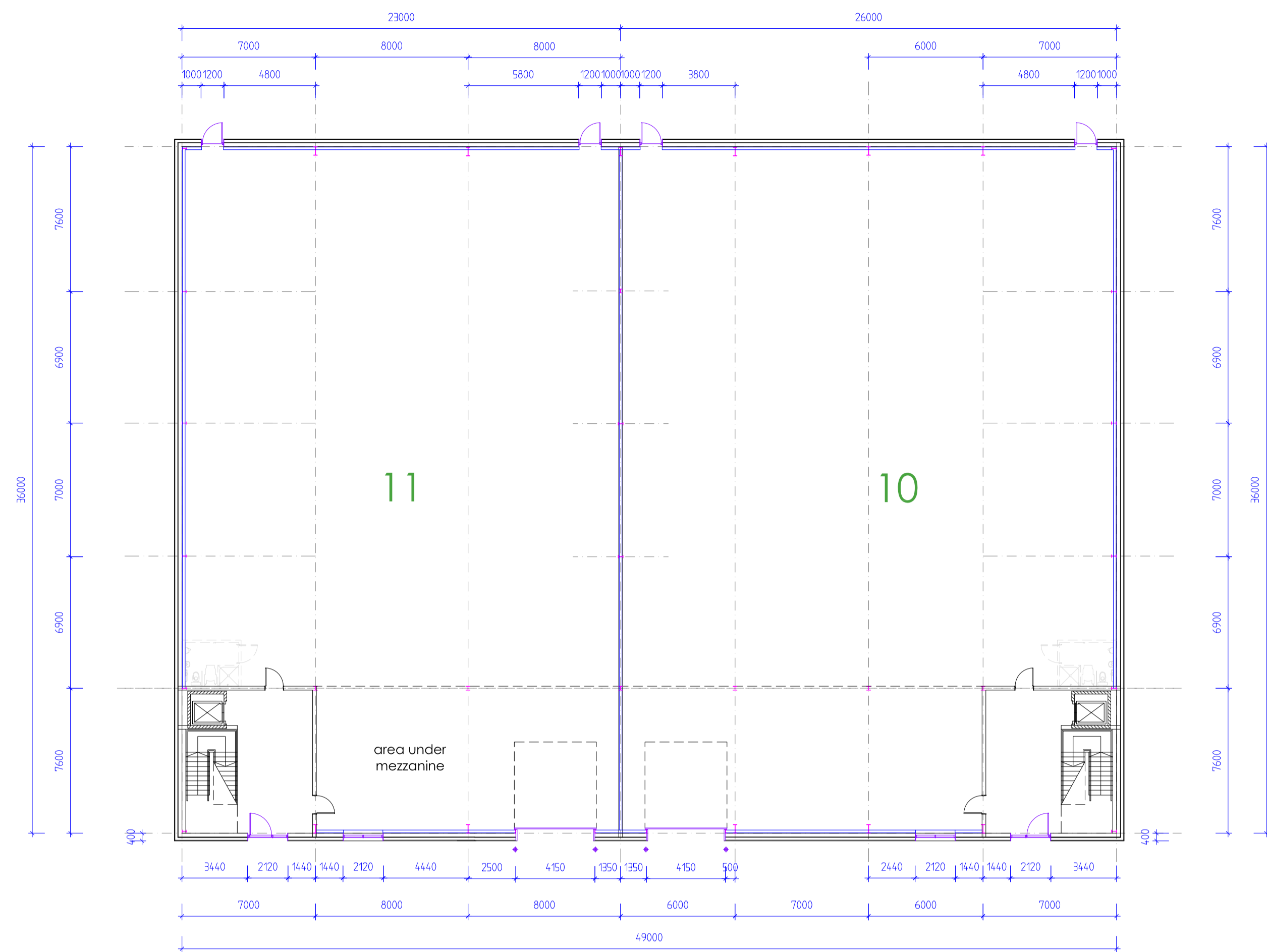
5 St George's Court
 131 Putney Bridge Road
 London SW15 2PA
 Tel: 020 8870 8937
 E-mail: icka@iancking.co.uk



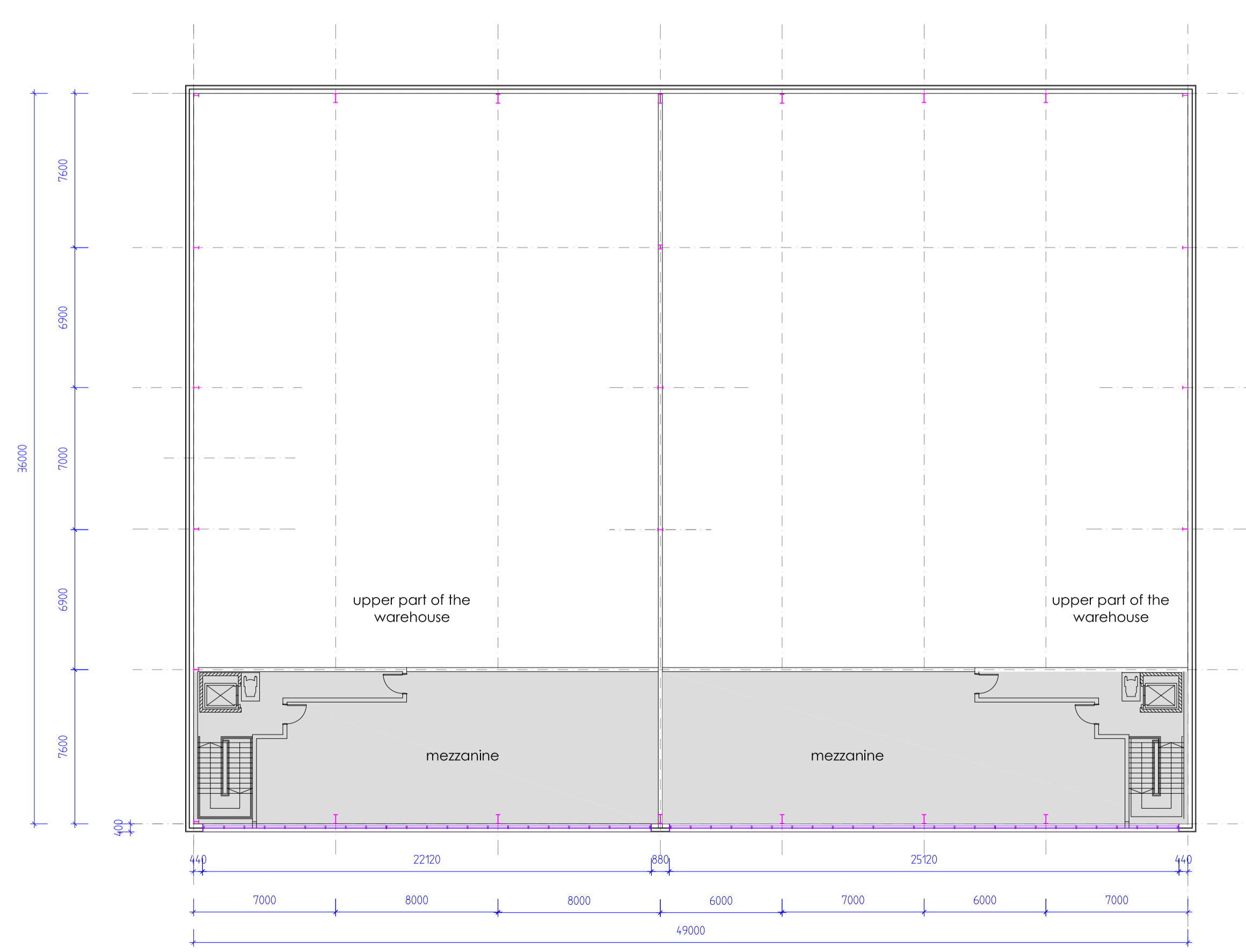
IAN C KING Associates - Architects is the Trading name of Gammony Ltd.



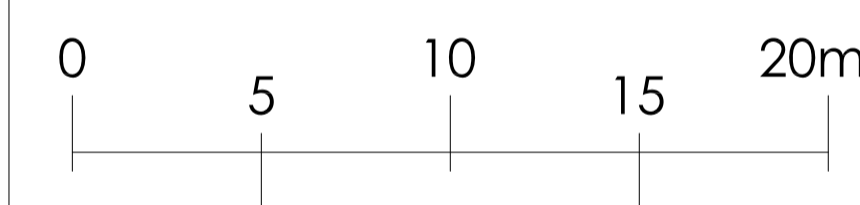
CBC Unit	Gf. area	Mezz. area	Total (GEA)
10	970m ²	210m ²	1180m ²
11	860m ²	190m ²	1050m ²
Total	1830m²	400m²	2,230m²



Ground Floor Plan



First Floor Plan



Rev D:
Rev C:
Rev B:
Rev A: 12-6-2019: Entrance cores amended

Notes
 This drawing is the sole copyright of IAN C KING Associates and no part may be reproduced without the written consent of the above
 Job

**Chancerygate
 Minworth**

Title **Units 10 - 11 - Floor plans
 Ground and First Floor**

Dwg No **C-373-TP-08**

Date **6-2019** Scale **1:200 (A1)** Rev **-**

Drawn _____ Checked _____ Planning Drawing

**IAN C KING
 ASSOCIATES - ARCHITECTS**

5 St George's Court
 131 Putney Bridge Road
 London SW15 2PA
 Tel: 020 8870 8937
 E-mail: icka@iancking.co.uk

